

SCREENING SENSORY EXAM

C4 Anterior shoulder

C5 Lateral forearm (elbow)

C6 Thumb

C7 3rd digit

C8 5th digit

T1 medial elbow

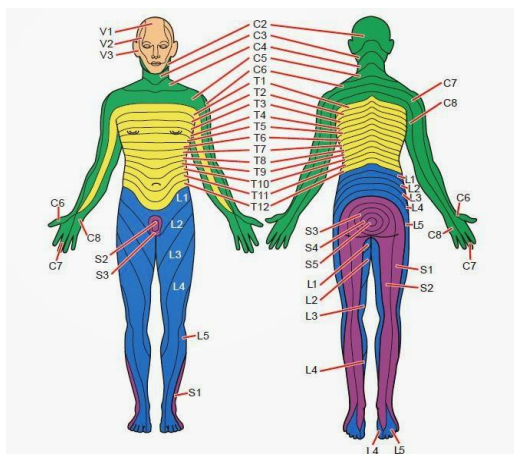
L2 anterior thigh

L3 medial knee

L4 medial ankle

L5 dorsum foot

S1 lateral heel



SCREENING MOTOR EXAM

C5 and axillary n: shoulder abduction

C5/6 and musculocutaneous n: elbow flexion

C7/8 and radial n: elbow extension

C8/T1 and ulnar n: finger abduction (spread fingers)

C8/T1 and median n.: thumb flexion and opposition (make an “O” with thumb and 5th digit)

L2-3 and femoral n: hip flexion

L3-4 and femoral n: knee extension

L4-5 and deep peroneal n: dorsiflexion

S1 and tibial n: plantar flexion